

ELS GARROFERS-SOLANES BRAND-NEW FLAT WITH 21 M2 TERRACE



FLAT FOR SALE IN SANT JUST DESVERN - CAN MELICH

First floor flat facing 4 winds, completely exterior, 150m² and a terrace at the foot of the dining room of 21m². Located in the Solanas building, of the GARROFERS It is distributed with a welcoming entrance hall, a spacious and bright living-dining room with access to a very wide terrace. Independent kitchen, 4 bedrooms (2 suites and 2 double bedrooms) plus 3 full bathrooms. It includes two large parking spaces and a storage room.

A home with avant-garde architecture, to enjoy nature, with magnificent views and tranquillity. The Solanas building is a building with only 3 neighbours designed and studied to meet all the most demanding and t

CHARACTERISTICS

LOCATION

REF. 32162

150 M2
 4
 3
 NEW



1.280.000 €



TAKE A LOOK 360°



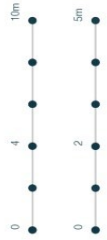
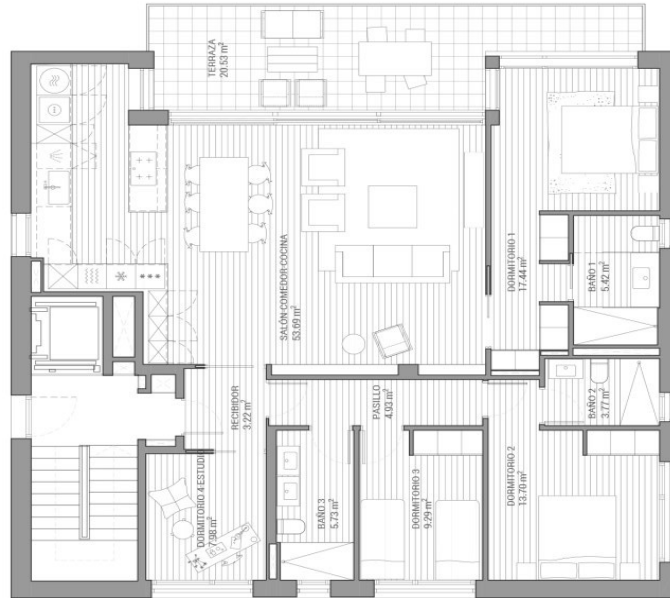
Els Garrofers · Solanes
C/Isaura Martínez Silva, 5
08960 Sant Just Desvern,
Barcelona

Planta Primera, Bloque A
PARCELA 3

Sup. const: 150,00 m²
Sup. útil: 125,17 m²
Sup. terr: 20,53 m²



Oficina de ventas
Carrer Bonavista, 65
08960 Sant Just Desvern
info@garrofers.es
www.garrofers.es



CA Aquest plaer de informació no constitueix un document contractual. La Propietat es reserva la facultat de modificar, per imperatiu de les administracions competents i per les directives de la direcció facultativa, les característiques, distribucions i superfícies mostrades al plaer. Els models i armaris que figuren en aquest plaer són orientatius i no formen part de l'habitatge.

ES Este plano es informativo y no constituye un documento contractual. La Propiedad se reserva la facultad de modificar, por imperativo de las administraciones competentes y por las directivas de la dirección facultativa, las características, distribuciones y superficies mostradas en el plano. Los muebles y los armarios que figuran en este plano son orientativos y no forman parte de la vivienda.

EN This plan is informative and does not constitute a contractual document. The Property reserves the right to modify, by imperative of the competent administrations and by the guidelines of the facultative direction, the characteristics, distributions and surfaces shown in the plan. The furniture and cabinets that appear in this plan are indicative and are not part of the house.