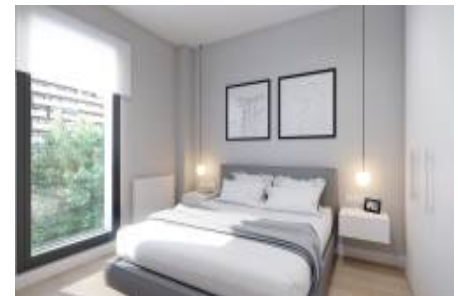


NEW DEVELOPMENT PASSEIG TAULAT 179



PISOS OBRA NUEVA PARA LA VENTA IN BARCELONA - EL POBLENOU

9l Wl gj] Y`bYk `vfUbX`ZUhg`]b`DcV`Ybci ž`cbY`cZĤ`Y`a`cgh`XYg]fUV`Y`bY][`Vcf`ccXg`cZ`6UfW`cbUž`U`Zyk`a`YhYfg`Zca`A`L`Bella beach.

Located in an area with a wide variety of cultural, gastronomic and commercial offer. With all kinds of stores, from the most prestigious and luxury, to local shops with innovative and surprising proposals. In the environment we find schools, market, public transport and all kinds of services, allowing a more comfortable life to enjoy everything a few steps.

The building consists of 56 houses on 7 floors (Stairs A and B). Parking and storage in the same building required to acquire part. Top quality finishes. Community area with terrace and pool.

CHARACTERISTICS

LOCATION

REF. 50262



from 411.000 €
to 1.150.000 €



REF.	TIPO	DPTO.					PRECIO	
25970	Flat	Num. 179 - Esc. A - 3 - A	81	2	2	Û	417.000 €	
25971	Flat	Num. 179 - Esc. A - 5 - A	81	2	2	Û	433.000 €	
25973	Flat	Num. 179 - Esc. A - 2 - A	81	2	2	Û	411.000 €	
25976	Flat	Num. 179 - Esc. A - 1 - B	97	3	2	Û	492.000 €	
25978	Flat	Num. 179 - Esc. A - 3 - B	97	3	2	Û	504.000 €	
25982	Flat	Num. 179 - Esc. A - 2 - B	97	3	2	Û	498.000 €	
25983	Flat	Num. 179 - Esc. A - 4 - B	97	3	2	Û	510.000 €	
25984	Flat	Num. 179 - Esc. A - 5 - B	97	3	2	Û	516.000 €	
25985	Flat	Num. 179 - Esc. A - 6 - B	97	3	2	Û	524.000 €	
25988	Flat	Num. 179 - Esc. A - 1 - C	89	3	2	Û	613.000 €	
25990	Flat	Num. 179 - Esc. A - 2 - C	89	3	2	Û	619.000 €	
26008	Flat	Num. 179 - Esc. B - 1 - 3	108	4	2	Û	705.000 €	
26009	Flat	Num. 179 - Esc. B - 2 - 3	108	4	2	Û	711.000 €	
26010	Flat	Num. 179 - Esc. B - 3 - 3	108	4	2	Û	717.000 €	
26011	Flat	Num. 179 - Esc. B - 4 - 3	108	4	2	Û	725.000 €	
26012	Flat	Num. 179 - Esc. B - 5 - 3	108	4	2	Û	733.000 €	
26013	Flat	Num. 179 - Esc. B - 6 - 3	108	4	2	Û	741.000 €	
26014	Flat	Num. 179 - Esc. B - 1 - 4	109	4	2	Û	633.000 €	
26015	Flat	Num. 179 - Esc. B - 2 - 4	109	4	2	Û	639.000 €	
26016	Flat	Num. 179 - Esc. B - 3 - 4	109	4	2	Û	645.000 €	
26017	Flat	Num. 179 - Esc. B - 4 - 4	109	4	2	Û	653.000 €	
26018	Flat	Num. 179 - Esc. B - 5 - 4	109	4	2	Û	661.000 €	
26019	Flat	Num. 179 - Esc. B - 6 - 4	109	4	2	Û	669.000 €	

26021	Flat	Num. 179 - Esc. B - 3 - 1	90	3	2	Û	605.000 €	■
26022	Flat	Num. 179 - Esc. B - 4 - 1	90	3	2	Û	613.000 €	■
26023	Flat	Num. 179 - Esc. B - 1 - 5	73	2	1	Û	426.000 €	■
26024	Flat	Num. 179 - Esc. B - 2 - 5	73	2	1	Û	432.000 €	■
26025	Flat	Num. 179 - Esc. B - 3 - 5	73	2	1	Û	438.000 €	■
26026	Flat	Num. 179 - Esc. B - 4 - 5	73	2	1	Û	446.000 €	■
26027	Flat	Num. 179 - Esc. B - 5 - 5	73	2	1	Û	456.000 €	■
26028	Flat	Num. 179 - Esc. B - 6 - 5	73	2	1	Û	464.000 €	■
26029	Flat	Num. 179 - Esc. B - 7 - 2	125	4	2	Ü	1.150.000 €	■