

## JOSEP RICART 11 - NEW 3-BEDROOM FLAT WITH A 9 M<sup>2</sup> TERRACE



### FLAT FOR SALE IN SANT FELIU DE LLOBREGAT - CENTRE O CAN NADAL

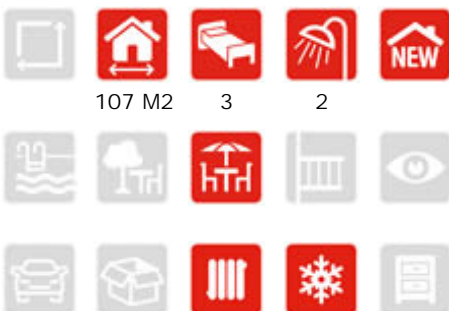
Outstanding 3-bedroom, 2-bathroom brand new apartment, entirely exterior with a 9 sqm terrace. Located in the heart of Sant Feliu, one of the most well-connected residential neighbourhoods.

The flat is distributed in a spacious and bright living-dining room with an open plan kitchen and access to a 9sqm terrace. Comprising 2 double bedrooms (a master with bathroom en-suite and built-in wardrobe), a 3rd individual room and a 2nd bathroom. The building encompasses a parking space and storage room, although these are not included in the price.

#### CHARACTERISTICS

#### LOCATION

#### REF. 31100



107 M2

3

2

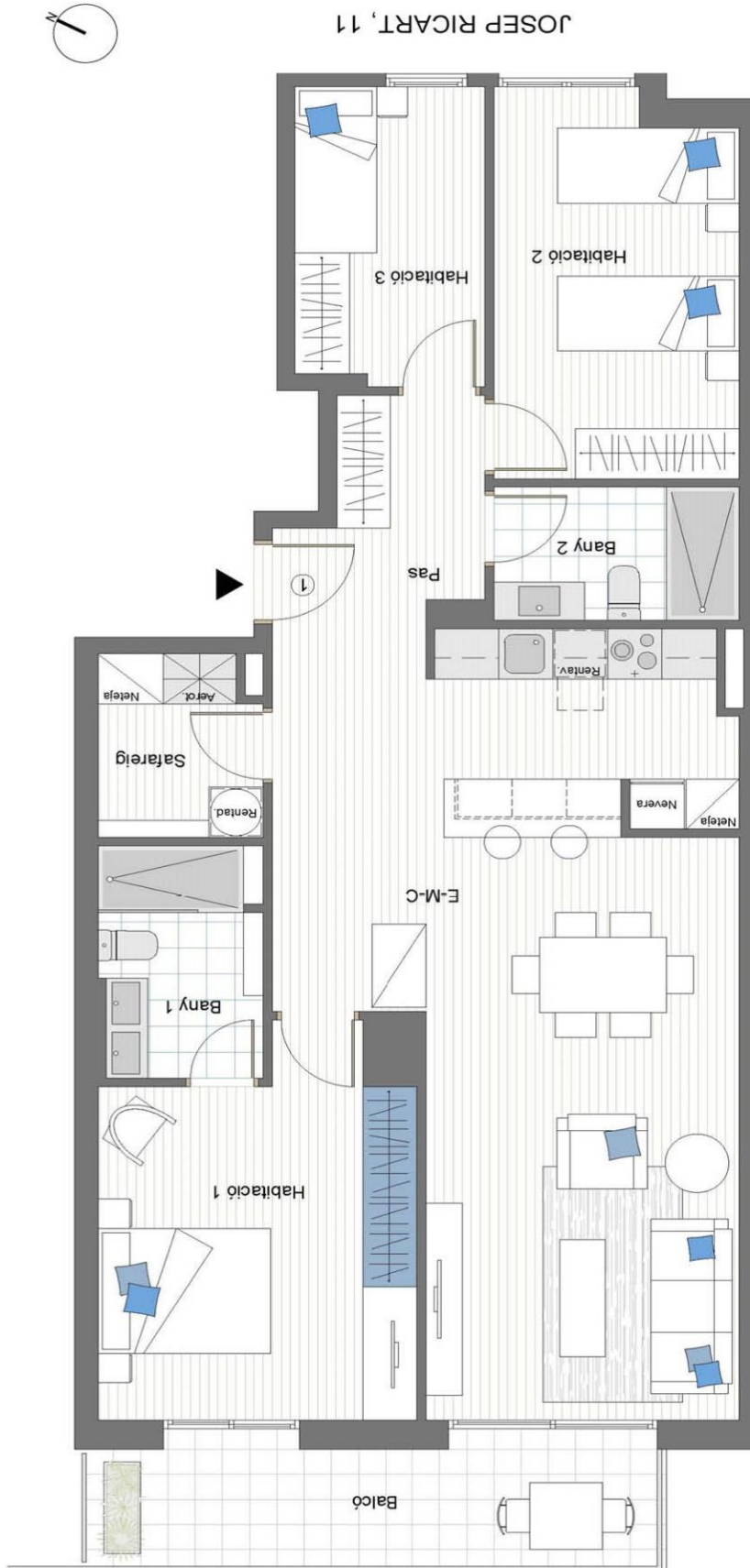


465.000 €

ESCALA DE LA CALIFICACIÓN ENERGÉTICA	Consumo de energía primaria	Emissiones de CO <sub>2</sub> (kg/m <sup>2</sup> /año)
A (más eficiente)		
B		
C		
D		
E		
F		
G (menos eficiente)		

TAKE A LOOK 360°

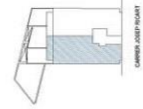




SUPERFÍCIES ÚTILS	
ESTAR/REBOLLADOR/CUINA	38,01 m <sup>2</sup>
HABITACIÓ 1	14,88 m <sup>2</sup>
HABITACIÓ 2	12,17 m <sup>2</sup>
HABITACIÓ 3	7,45 m <sup>2</sup>
BANY 1	4,95 m <sup>2</sup>
BANY 2	4,32 m <sup>2</sup>
PAS	6,24 m <sup>2</sup>
SAFAREIG	3,82 m <sup>2</sup>
<b>SUP. ÚTIL TOTAL</b>	<b>92,84 m<sup>2</sup></b>

SUPERFÍCIES CONSTRUÏDES	
SUP. CONSTRUÏDA	107,05 m <sup>2</sup>
SUP. CONST. BALCÓ	8,63 m <sup>2</sup>



E: 1/100  
0 1 2 m

Tedera, S.L.