

JOSEP RICART 11 - BRAND NEW FLAT WITH 28 M² TERRACE



FLAT FOR SALE IN SANT FELIU DE LLOBREGAT - CENTRE O CAN NADAL

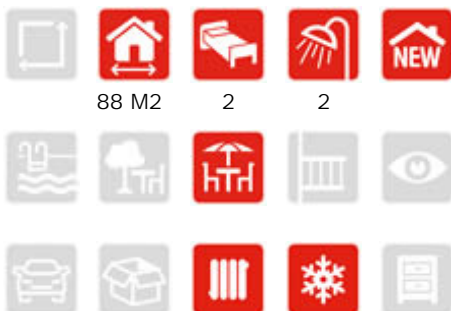
Outstanding 2-bedroom, 2-bathroom brand new apartment, entirely exterior with a 28sqm terrace. Located in the heart of Sant Feliu, one of the most well-connected residential neighbourhood.

The flat is distributed in a spacious and bright living-dining room with an open plan kitchen and exit to the large 28sqm terrace. Comprising 2 double bedrooms (a master with bathroom en-suite and built-in wardrobe, other with dressing area), and a 2nd bathroom. The building encompasses a parking space and storage room, although these are not included in the price.

CHARACTERISTICS

LOCATION

REF. 31099

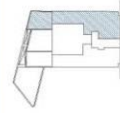
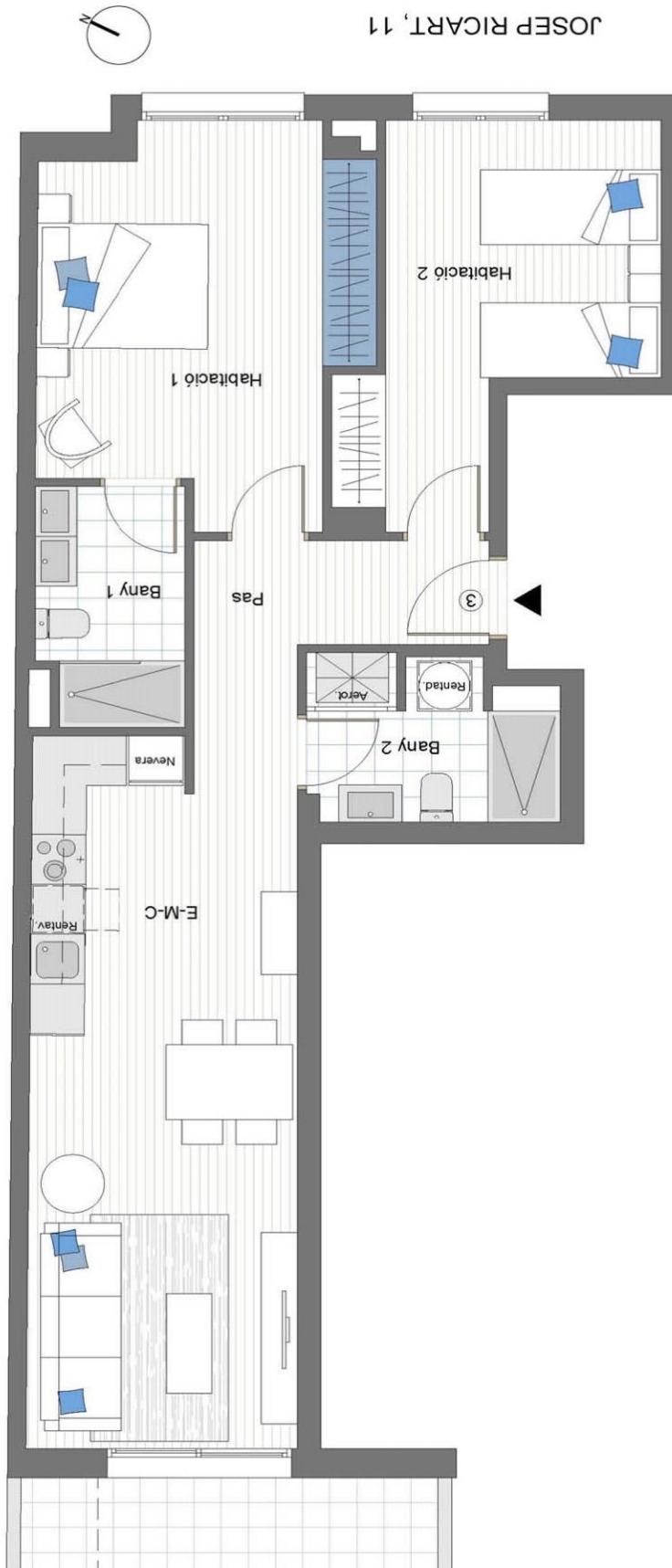


395.000 €



TAKE
A LOOK
360°





1r-3a	1
PLANTA	Planta 3
HABITACIO	(2 Habitacions)
SUPERFÍCIES ÚTILS	
ESTAR/MENJADOR/CUINA	24.67 m²
HABITACIO 1	15.55 m²
HABITACIO 2	12.54 m²
BANY 1	4.65 m²
BANY 2	5.00 m²
PAS	6.13 m²
SUP. ÚTIL TOTAL	68.46 m²
SUPERFÍCIES CONSTRUÏDES	
SUP. CONSTRUÏDA	80.86 m²
SUP. CONST. TERRASSA	28.15 m²
SUP. CONST. TOTAL	109.00 m²

0 1 2 m. E 1/75
Tadera, S.L.

