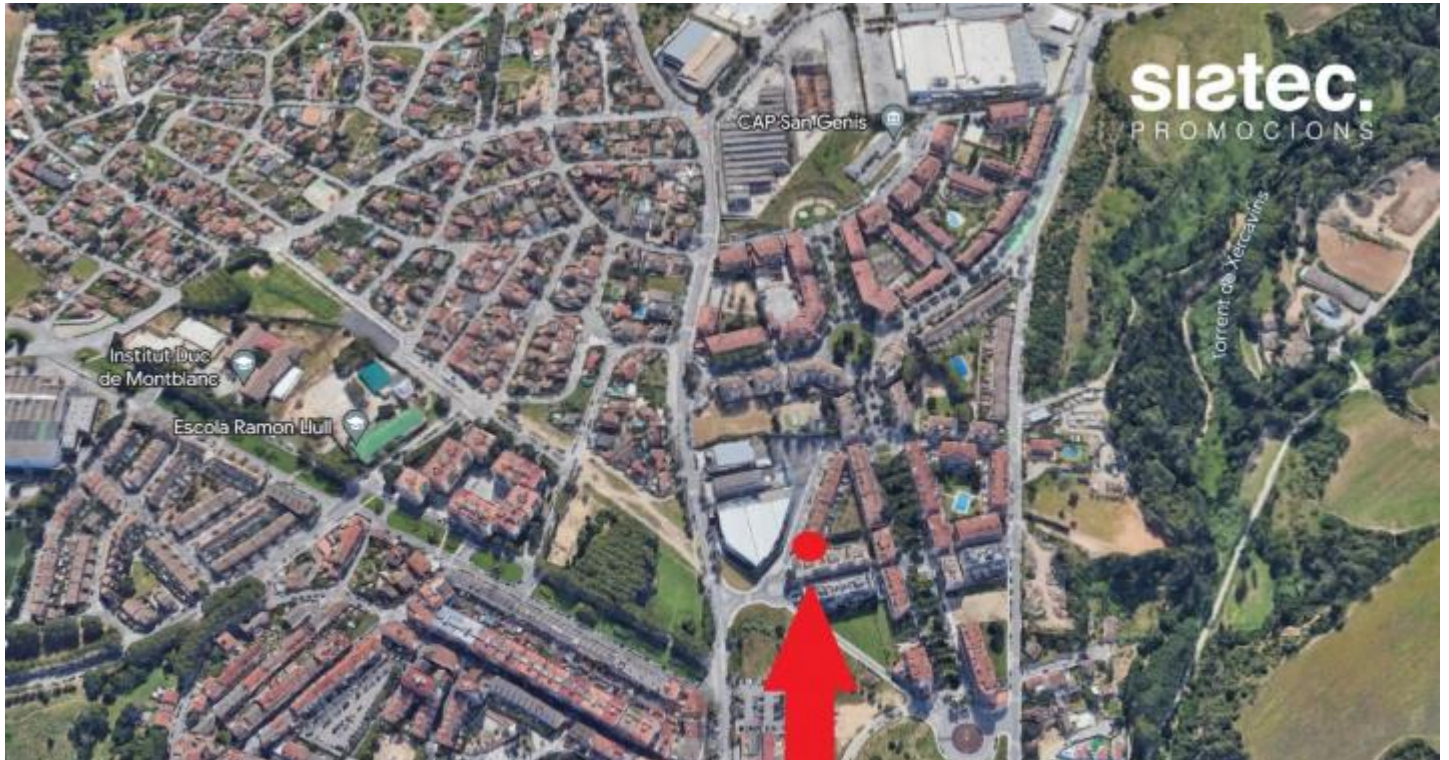


## BRAND NEW SEMI-DETACHED HOUSE IN THE BEST NEIGHBORHOOD, SANT JORDI PARK



### HOUSE FOR SALE IN RUBÍ

Brand new semi-detached house of 202 m<sup>2</sup> in the best neighborhood of Rubí, Sant Jordi Park, surrounded by large roads, green areas and all services.

Construction project of 3 houses with 4 floors: ground floor, 1st floor, ground floor and basement for a garage.

### CHARACTERISTICS



### LOCATION



### REF. 30800

450.000 €



TAKE  
A LOOK  
360°



