

JARDINS CAN MATAS - BRAND-NEW PENTHOUSE WITH 2 BEDROOMS & TERRACE



FLAT FOR SALE IN TIANA

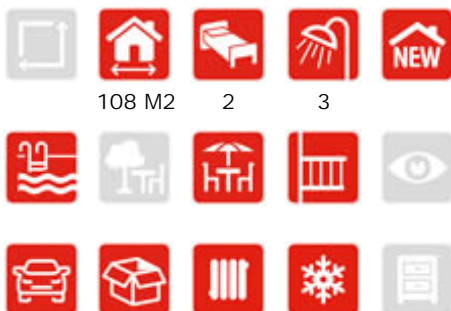
Duplex corner penthouse facing the surrounding garden areas, distributed in living-dining room with a semi-open kitchen, 2 double bedrooms, one of them a suite, 2 bathrooms and terrace with access from the living room. 21 sq. m multipurpose area with bathroom on the rooftop and an 11 sq. m solarium.

A HOME FOR THE FUTURE. Jardins de Can Matas, is a project of 5 buildings with ground floor and two more floors, with 12-15 flats per building, achieving the integration of the large green areas. Sustainable construction, energy efficient and respectful with the environment. Corner or intern homes, with an attractive and innovative design and thanks to its elaborate distribution, it allows you to enjoy unique lighting and views. Large terraces in all homes, design

CHARACTERISTICS

LOCATION

REF. 30681



490.000 €

ESCALA DE LA CALIFICACIÓN ENERGÉTICA		
	Consumo de energía kWh/m²/año	Emissiones de CO2 kg/m²/año
A	Menos eficiente	
B		
C		
D		
E		
F		
G	Más eficiente	

TAKE
A LOOK
360°

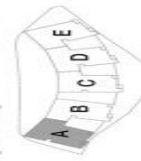
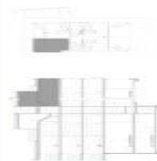




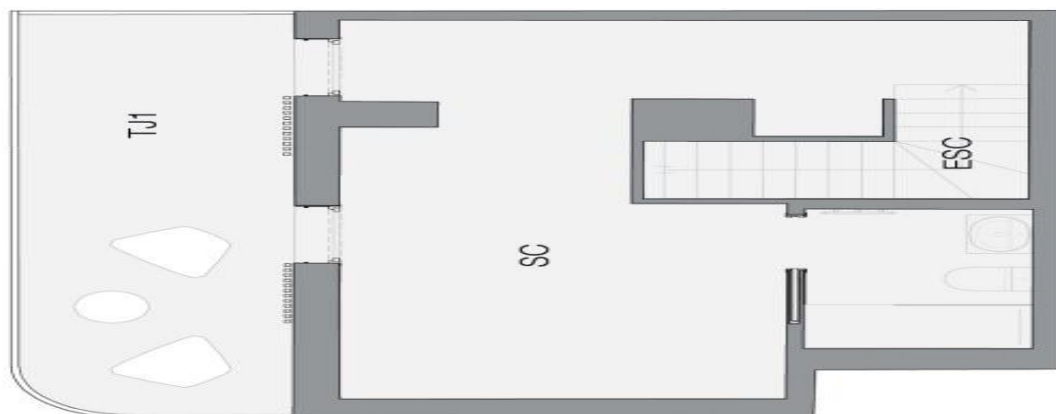
EDIFICI A
PLANTA SEGONA
HABITATGE 2.2

SUPERFÍCIES INTERIORS		m ²
Superfície útil		
Cuina	K	0,00
Estia-Almagador	EM	0,00
Estia-Almagador-Cuina	EMK	25,57
Dormitori 1	D1	11,11
Habitatge Dormitori 1		
Dormitori 2	D2	10,19
Dormitori 3	D3	0,00
Dormitori 4	D4	0,00
Bany principal	CH	2,48
Bany secundari	CH2	2,80
Habitatge	R	3,69
Passadís Distribució	D	4,74
Saló de rebre (1)	L1	1,39
Escala	ESC	2,89
Escalera de Coberta	ESC	27,94
TOTAL ÚTIL INTERIOR	86,60	
TOTAL CONSTRUÏDA INTERIOR	107,83	

SUPERFÍCIES EXTERIORS		m ²
Superfície Construida		
Terasa/Facil 1	TC1	6,66
Terasa/Facil 2	TC2	
Terasa/Facil 1	L1	11,91
Terasa/Facil 2	L2	
TOTAL CONSTRUÏDA EXTERIOR	18,57	



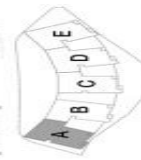
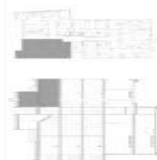
Immobilis des de 1948



EDIFICI A
PLANTA SEGONA
HABITATGE 2.2

SUPERFÍCIES INTERIORS		m ²
Superfície útil		
Cuina	K	0,00
Estia-Almagador	EM	0,00
Estia-Almagador-Cuina	EMK	25,57
Dormitori 1	D1	11,11
Habitatge Dormitori 1		
Dormitori 2	D2	10,19
Dormitori 3	D3	0,00
Dormitori 4	D4	0,00
Bany principal	CH	2,48
Bany secundari	CH2	2,80
Habitatge	R	3,69
Passadís Distribució	D	4,74
Saló de rebre (1)	L1	1,39
Escala	ESC	2,89
Escalera de Coberta	ESC	27,94
TOTAL ÚTIL INTERIOR	86,60	
TOTAL CONSTRUÏDA INTERIOR	107,83	

SUPERFÍCIES EXTERIORS		m ²
Superfície Construida		
Terasa/Facil 1	TC1	6,66
Terasa/Facil 2	TC2	
Terasa/Facil 1	L1	11,91
Terasa/Facil 2	L2	
TOTAL CONSTRUÏDA EXTERIOR	18,57	



Immobilis des de 1948

