

CAN LLOBET - BRAND NEW HOUSE OF * (, SQ. M, WITH PRIVATE GARDEN AND POOL



HOUSE FOR SALE IN BELLATERRA

Brand new detached house with a constructed area of * (, sq. m, private garden and pool, as well as underground parking with space for 2 cars. Distributed over 4 floors, it has 4 large bedrooms, 3 full bathrooms and a spacious living-dining room with direct access to the terrace and garden, which provides plenty of natural light.

CAN LLOBET is a newly built project of 9 spectacular houses, built on 3 plots of 3,100 sq. m in total, on Can Llobet street in Bellaterra. The urbanization is located in the middle of nature environment, in one of the best areas of Bellaterra, in a quiet environment surrounded by green spaces.

CHARACTERISTICS



LOCATION



REF. 30594

1.570.000 €



| ESCALA DE LA CLASIFICACIÓN ENERGÉTICA | | Consumo energético anual (kWh/m²/año) | Emissiones de CO2 (kg/m²/año) |
|---------------------------------------|-----------------|---------------------------------------|-------------------------------|
| A | Más eficiente | 15 | 0,5 |
| B | | 16 | 0,6 |
| C | | 17 | 0,7 |
| D | | 18 | 0,8 |
| E | | 19 | 0,9 |
| F | | 20 | 1,0 |
| G | Menos eficiente | 21 | 1,1 |

TAKE A LOOK 360°



Can Llobet 3 - Villa 2

Sup. Const.Sobre rasante: 209,38m²

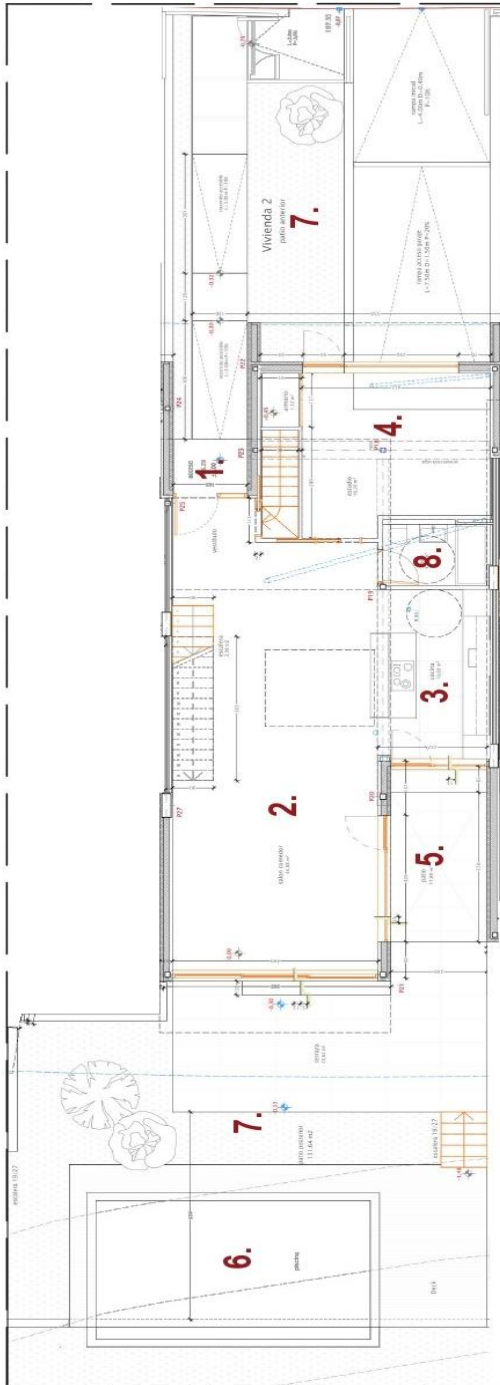
Sup. Const.Bajo rasante :91,20m²

Sup. Terrazas/Patios: 47,60m²

Total Sup. Venta: 375,03m²

PLANTA BAJA

1. Entrada
2. Salón/Comedor
3. Cocina
4. Estudio/Habitación
5. Páto
6. Piscina
7. Jardín privado
8. Aseo de cortesía



PLANTA SÓTANO

1. Rampa de acceso parking
2. Parking/Sótano
3. Trastero/Lavandería
4. Escalera

