

ANTARES - THE ART OF DISTINCTION, A LUXURY SKYSCRAPER FACING THE SEA



FLAT FOR SALE IN BARCELONA - DIAGONAL MAR

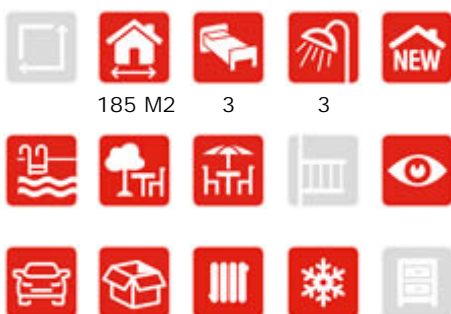
Spectacular brand-new apartment on the 16th floor of an iconic building facing the sea. It has 3 bedrooms, 3 bathrooms (2 suites), open plan kitchen and living room and 2 terraces (one of 35sqm with sea views and the other of 16sqm with city views). It also has 2 parking spaces and 1 storage room.

ANTARES is a brand-new luxury residential building, facing the sea and an architectural statement, by the prestigious architect Odile Decq, which transforms the Barcelona skyline. ANTARES offers a wide range of apartments, penthouses and duplexes from 98sqm to 386sqm with between 1 and 4 bedrooms, large floor-to-ceiling windows, as well as large and elegant curved terraces with 360° views across the city, the Mediterranean Sea and the surrounding mountains. All the apartments have a modern style, in neutral tones, with an open plan design and unique details, all

CHARACTERISTICS

LOCATION

REF. 30240

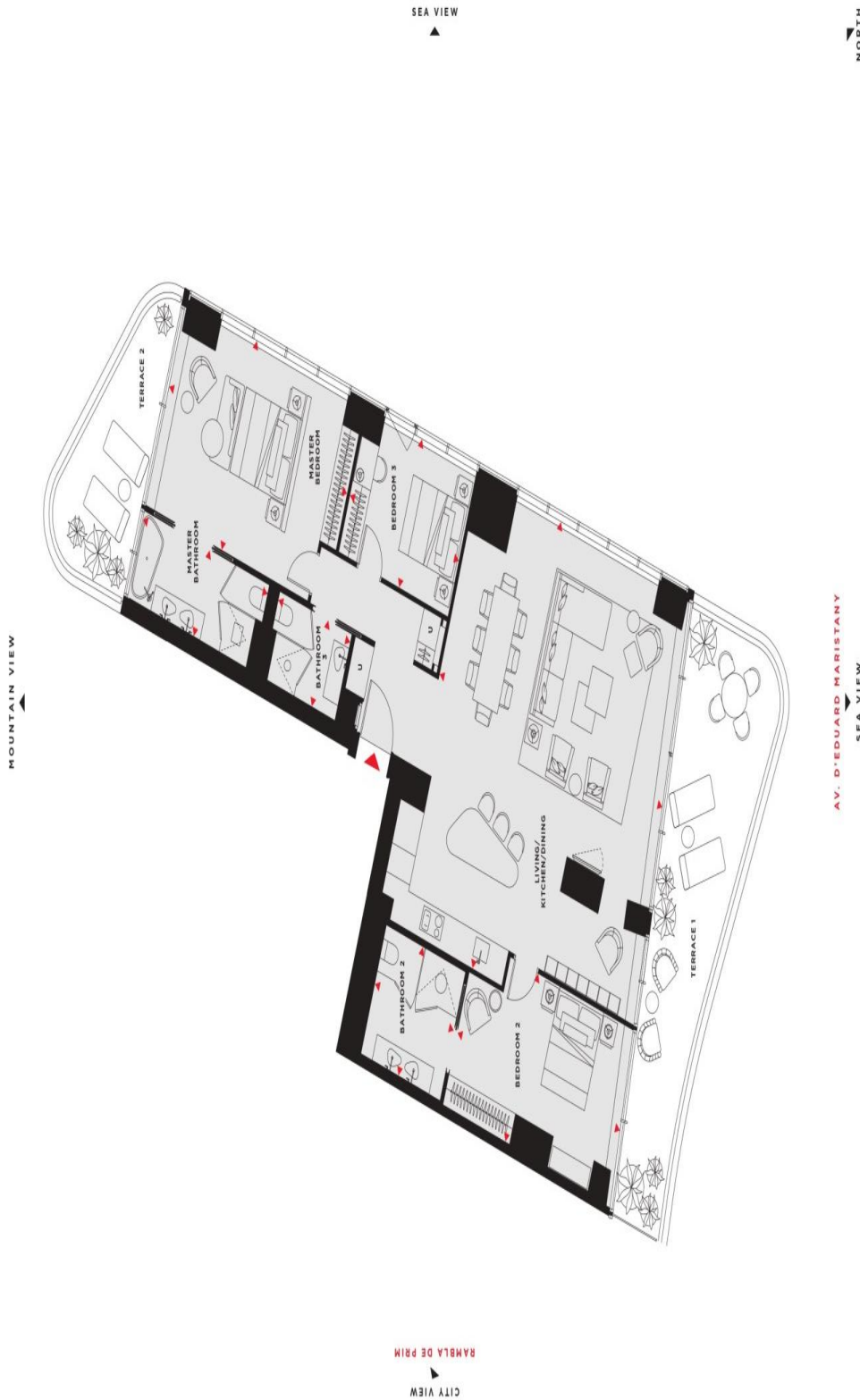


2.800.000 €



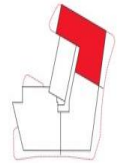
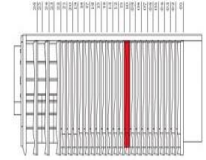
TAKE
A LOOK
360°





FLOOR 10 RESIDENCE 10.03

Living / Kitchen / Dining	9.5m x 8.2m
Master Bedroom	4.4m x 6.6m
Master Bathroom	1.8m x 4.6m
Bedroom 1	3.7m x 4.6m
Bedroom 2	3.7m x 5.2m
Bedroom 3	3.1m x 4.6m
Bedroom 4	1.8m x 2.6m
Bathroom 2	1.8m x 2.6m
Staircase and Corridor	384.7 sq m
Gross Built Area	352.6 sq m
Terrace 1	16.3 sq m
Terrace 2	16.3 sq m



These plans, photographs, drawings, the layout of the floor plan, and the location of the building are for informational purposes only. They are not intended to be used as a basis for any legal or financial transaction. The actual situation may differ from the information provided. The views are not guaranteed and are subject to change without notice. The views are not intended to be used as a basis for any legal or financial transaction. The actual situation may differ from the information provided. The views are not guaranteed and are subject to change without notice.