

CAN MATAS GARDENS



FLAT FOR SALE IN TIANA

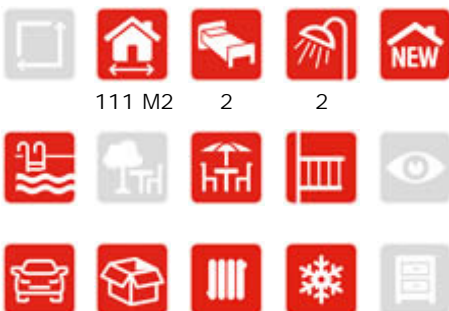
Duplex penthouse facing the surrounding gardens. It is distributed differentiating the day and night zone. It consists of a kitchen open to a living-dining room, 2 double bedrooms, 1 bathroom and a terrace with access from the living room. On the covered floor, a 21m2 multipurpose area with a bathroom and an 11sqm solarium.

A HOME FOR THE FUTURE. Jardins de Can Matas, is a project of 5 buildings with ground floor and two more floors, with 12-15 apartments per building, achieving the integration of the large green areas. Sustainable construction, energy efficient and respectful with the environment. Corner or intern homes, with an attractive and innovative design and thanks to its elaborate distribution, it allows you to enjoy unique lighting and views. Large terraces in all homes designed to optimize solar orientation and privacy between the different units. Ground floors with gardens and

CHARACTERISTICS

LOCATION

REF. 30137



525.000 €

| ESCALA DE LA CALIFICACION ENERGETICA | Consumo de energia kWh/m ² /año | Emissiones CO ₂ (kg/m ² /año) |
|--------------------------------------|--|---|
| A (más eficiente) | | |
| B | | |
| C | | |
| D | | |
| E | | |
| F | | |
| G (menos eficiente) | | |

TAKE
A LOOK
360°





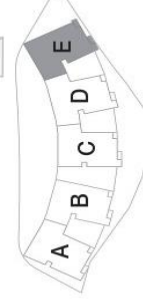
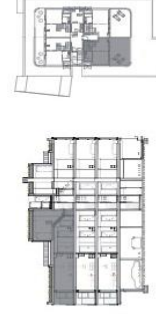
**EDIFICI E
PLANTA SEGONA
HABITATGE 2.3**

SUPERFÍCIES ÚTILES INTERIORES

| Superficie Útil | m2 | |
|----------------------------------|-----|---------------|
| Cuina | K | 0,00 |
| Estar-Menjador | EM | 0,00 |
| Estar-Menjador-Cuina | EMK | 29,04 |
| Dormitori 1 | D1 | 10,00 |
| Vestidor Dormitori 1 | V | 0,00 |
| Dormitori 2 | D2 | 9,98 |
| Dormitori 3 | D3 | 0,00 |
| Dormitori 4 | D4 | 0,00 |
| Bany principal | CH1 | 3,51 |
| Bany secundari | CH2 | 0,00 |
| Rebedor | R | 5,51 |
| Passadís-Distribuidor | D | 6,30 |
| Safareig interior (1) | LI | 2,56 |
| Escala | ESC | 3,27 |
| Espai sota Coberta | SC | 19,39 |
| TOTAL ÚTIL INTERIOR | | 89,56 |
| TOTAL CONSTRUÏDA INTERIOR | | 111,41 |

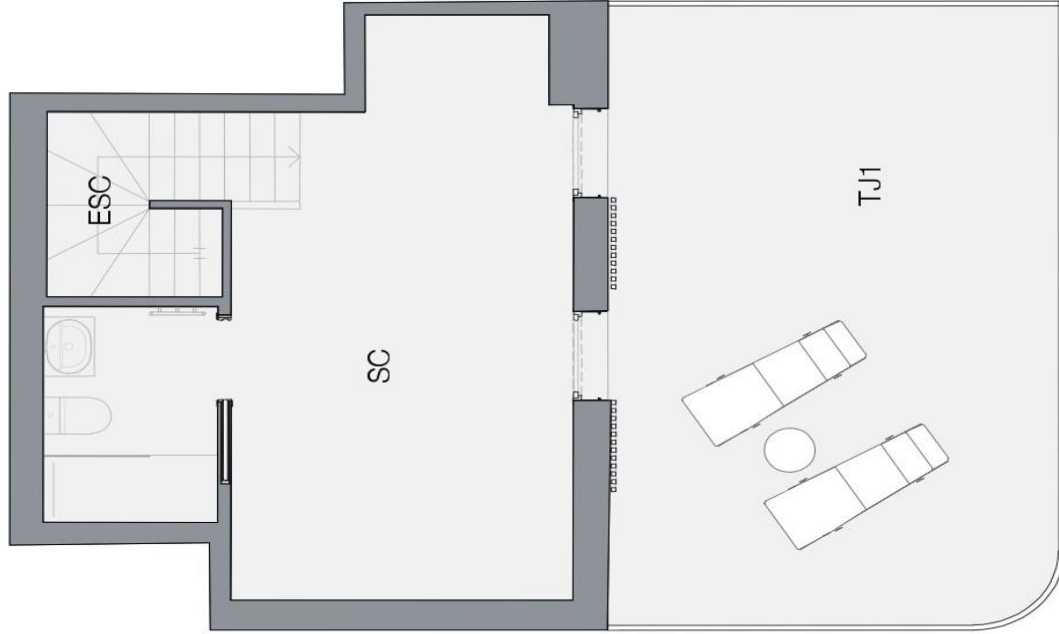
SUPERFÍCIES EXTERIORS

| Superficie Construída | m2 | |
|----------------------------------|-----|--------------|
| Terrassa/Balcó 1 | TC1 | 9,05 |
| Terrassa/Balcó 2 | TC2 | |
| Terrassa/Jardi 1 | TJ1 | 25,22 |
| Terrassa/Jardi 2 | TJ2 | |
| TOTAL CONSTRUÏDA EXTERIOR | | 34,27 |



PROMOCIÓ D' HABITATGES A TIANA

C/ de Sant Jaume, C/ Joan Garí i Riera de Tiana



La informació continguda en aquest pla no té caràcter definitiu, no té valor contractual ni obligatori, i està subjecta a canvis sense previ avís. La informació continguda en aquest pla no té caràcter definitiu, no té valor contractual ni obligatori, i està subjecta a canvis sense previ avís.