

JARDINS DE CAN MATAS - GROUND FLOOR BRAND NEW WITH 4 BEDROOMS AND TERRACE-GARDEN



FLAT FOR SALE IN TIANA

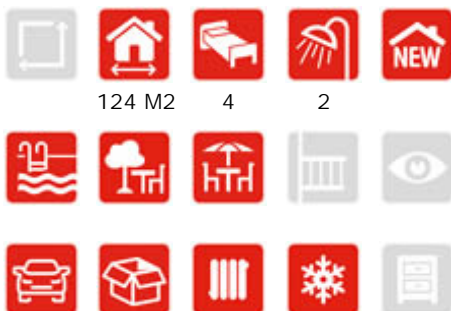
Corner ground floor oriented towards the surrounding garden areas. It is distributed by differentiating the day and night area. It consists of semi-open kitchen to living-dining room 42sqm in total, 4 double bedrooms, one of them a suite, 2 bathrooms, terrace and 61sqm garden with access from the living room.

A HOME FOR THE FUTURE. Jardins de Can Matas, is a project of 5 buildings with ground floor and two more floors, with 12-15 apartments per building, achieving the integration of the large green areas. Sustainable construction, energy efficient and respectful with the environment. Corner or intern homes, with an attractive and innovative design and thanks to its elaborate distribution, it allows you to enjoy unique lighting and views. Large terraces in all homes designed to optimize solar orientation and privacy between the different units. Ground floors with gardens and

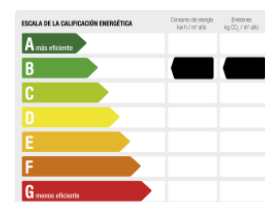
CHARACTERISTICS

LOCATION

REF. 30110



595.000 €



TAKE
A LOOK
360°

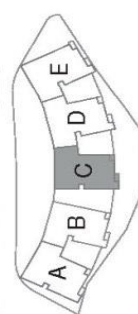




EDIFICI C
PLANTA BAIXA
HABITATGE B.3

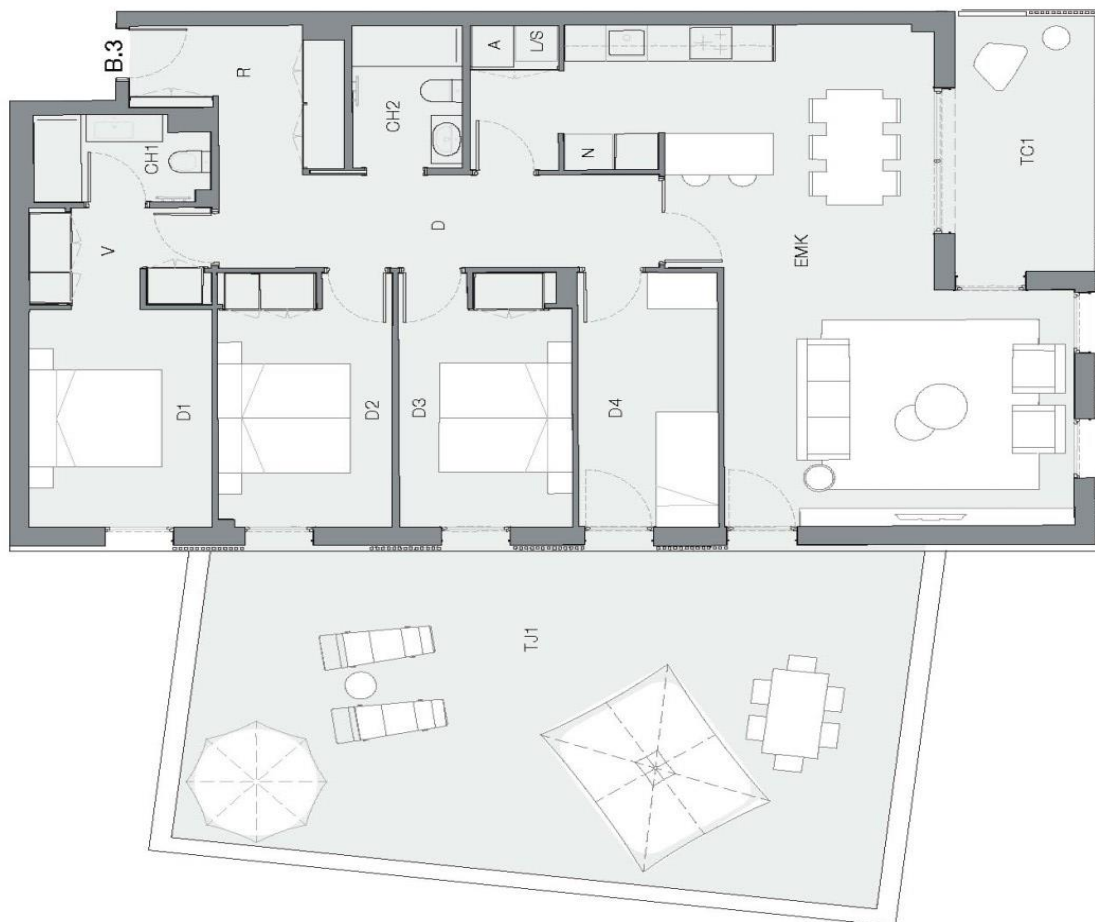
SUPERFÍCIES INTERIORS	
Superfície Útil	m2
Quina	K 0,00
Esclat-Menjador	EM 0,00
Esclat-Menjador-Cuina	EMK 42,57
Dormitori 1	D1 10,11
Vestidor Dormitori 1	V 3,53
Dormitori 2	D2 10,42
Dormitori 3	D3 10,31
Dormitori 4	D4 8,48
Bany principal	CH1 3,44
Bany secundari	CH2 3,72
Rebedor	R 6,05
Passadís-Distribuidor	D 9,67
Sofaract interior (1)	LI 0,00
Escala	ESC 0,00
Espai sota Coberta	SC 0,00
TOTAL ÚTIL INTERIOR	108,30
TOTAL CONSTRUÏDA INTERIOR	123,59

SUPERFÍCIES EXTERIORS	
Superfície Construída	m2
Terrassa/Balcó 1	TC1 8,46
Terrassa/Balcó 2	TC2 61,35
Terrassa/Jardí 1	TJ1 61,35
Terrassa/Jardí 2	TJ2 61,35
TOTAL CONSTRUÏDA EXTERIOR	69,81



PROMOCIÓ D' HABITATGES A TIANA

C/ de Sant Jaume, C/ Joan Garí | Riera de Tiana



Promoció en construcció, susceptible de canvis per motius tècnics, impositió legal, milloras o per criteri del promotor de la obra. Mobiliari i Electrodomèstics no inclosos. La informació continguda en este plano es orientativa, no té valor contractual ni obligacional per part de FOCOMIN RESIDENCIAL S.L.