

AIM VERY HIGH



FLAT FOR RENT IN BARCELONA - EIXAMPLE DRETA

300sqm exterior penthouse carefully designed with top quality finishes. The flat is distributed in hall, living-dining room, with lots of natural light thanks to the large windows to the terrace. Pretty good views to an emblematic palace. The kitchen is fully equipped with laundry and staff area. Distributor with 3 suites, complete with bathroom, and another guest bathroom. Closet in all the rooms. Upstairs we find an multipurpose space waiting to get its best utility. Possibility of large storage room on the same building

CHARACTERISTICS

LOCATION

REF. 26920

300 M2
 4
 5
 NEW



8.000



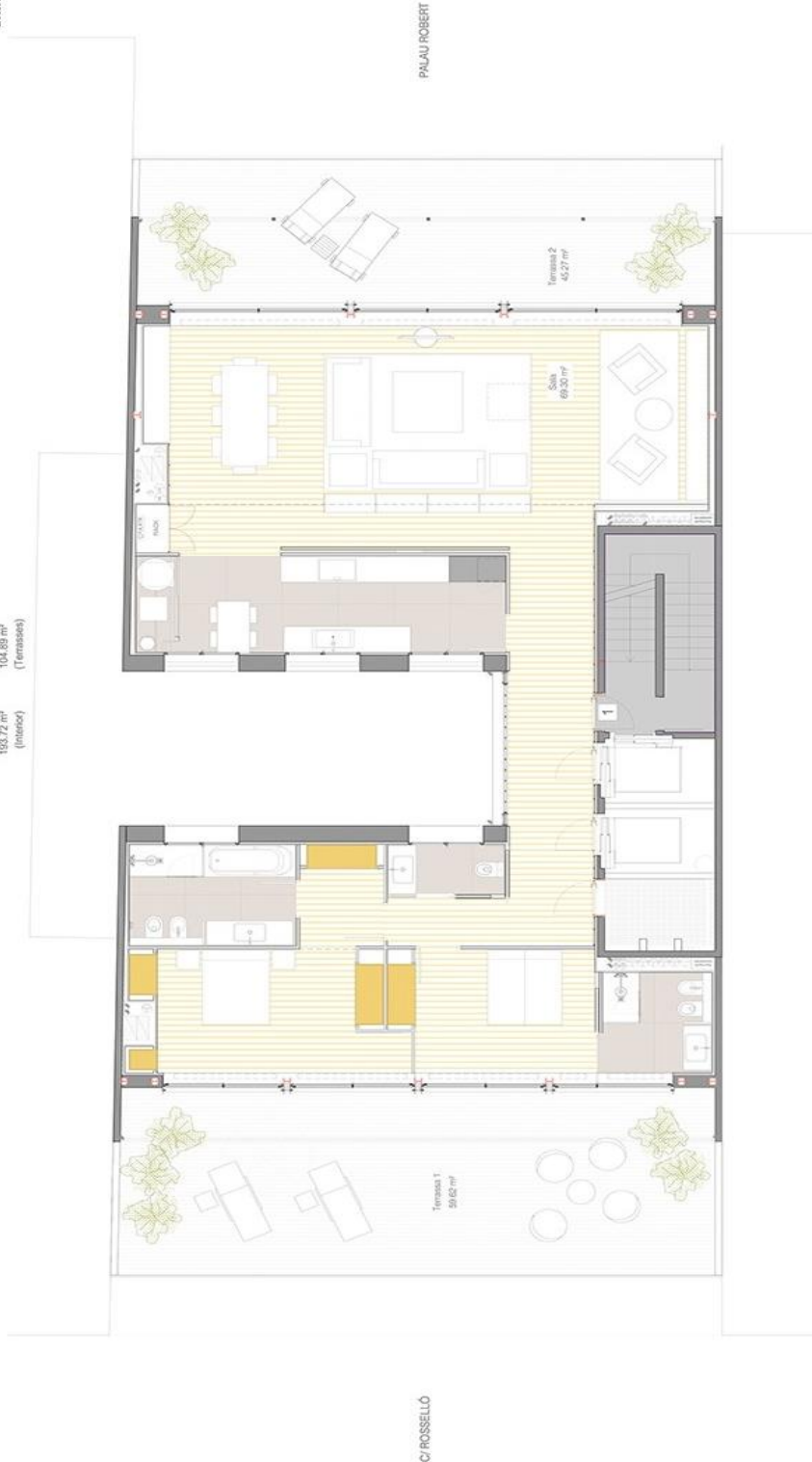
ESCALA DE LA CLASIFICACIÓN ENERGÉTICA	Consumo energético kWh/m²/año	Emissiones CO2/m²/año
A (Más eficiente)		
B	31	5
C		
D		
E		
F		
G (Menos eficiente)		

REF. PRICE €/m2	
Lower Index	11,35
Index	13,75
Top Index	22,77



RS257
BARCELONA

Habitatge 2D
193.72 m²
(interior)
104.89 m²
(Terrasses)



PLANTA 9a SOBREÀTIC
Procedi Reals 257
Arx. Ver. al Palau s.l.
UNIC Residencial s.l.



ESCALA: 1:50