

CHARMING BRAND NEW HOUSING IN SANT JUST CENTER



FLAT FOR SALE IN SANT JUST DESVERN - BARRI CENTRE

Singular, cozy and functional new construction housing, completely exterior facing the Ateneu St. It consists of an entrance hall, a large living room and an independent kitchen; 4 bedrooms (1 en suite with bathroom and a built-in wardrobe and 3 single bedrooms) and 2 full bathrooms and machinery room. Parking spaces and storage in the same building not included. Delivery 3st quarter of 2021.

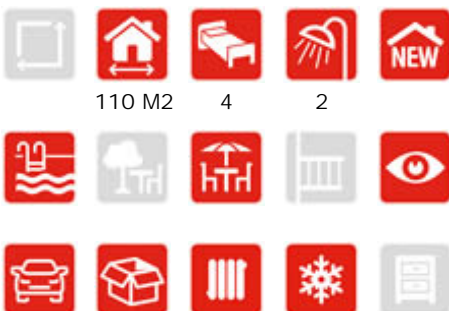
Brand new residential project located in Sant Just city center, one of the most charming residential areas because of its location in the foot of Collserola Natural Park and its closeness to Barcelona city.

Emblematic building newly built with 14 exclusive flats, 1 commercial premises, parking places and storage rooms. H

CHARACTERISTICS

LOCATION

REF. 24224



475.000 €



ESCALA DE LA CLASIFICACIÓN ENERGÉTICA		Consumo energético kWh/m²/año	Emissió CO ₂ /m²/año
A	Más eficiente		
B			
C			
D			
E			
F			
G	Menos eficiente		

TAKE
A LOOK
360°

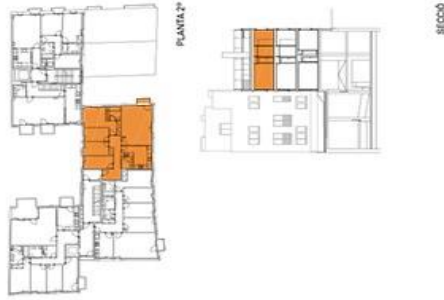


EDIFICI PLURIFAMILIAR DE 15 HABITATGES

BLOC B - Planta Segona - Porta 3a

Carretera Reial 44-48, SANT JUST DESVERN

BLOC B. PLANTA SEGONA. PORTA 3ª	m ² .029
Superfície construïda interior	108,70
Superfície construïda exterior	109,46
TOTAL Superfície construïda + s.c.	123,09
Superfície útil interior	92,65
Superfície exterior descoberta-terrassa	1,52



PLÀNOL SENSE VALOR CONTRACTUAL SUSCEPTIBLE DE SER MODIFICAT DURANT EL DESENVOLUPAMENT DEL PROJECTE EXECUTIU

TARGUS RESIDENCIAL SANT JUST

Vivendes coo-encarrio

C / Casp n° 116 Principal 1°, 08013 Barcelona
 Telf: 93 681 6996- www.larguspromobones.com

14/10/2019